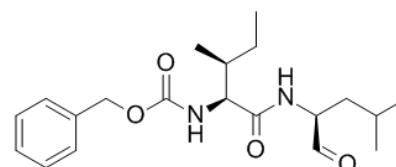


Product Name : Z-Ile-Leu-aldehyde
Cat. No. : PC-43045
CAS No. : 161710-10-7
Molecular Formula : C₂₀H₃₀N₂O₄
Molecular Weight : 362.4632
Target : γ -secretase
Solubility : DMSO: \geq 41 mg/mL



Biological Activity

Z-Ile-Leu-aldehyde (Z-IL-CHO, GSI-XII, γ -Secretase inhibitor XII) is a potent **gamma-secretase** and **Notch** signaling inhibitor.

Z-Ile-Leu-aldehyde (Z-IL-CHO, GSI-XII, γ -Secretase inhibitor XII) induces morphologic erythroid differentiation and promotes hemoglobin production, suppresses short-term growth and colony formation in erythroid leukemia cell lines.

Z-Ile-Leu-aldehyde (Z-IL-CHO, GSI-XII, γ -Secretase inhibitor XII) impairs murine osteoclast differentiation of RANKL-stimulated RAW264.7 cells in vitro.

Z-Ile-Leu-aldehyde (Z-IL-CHO, GSI-XII, γ -Secretase inhibitor XII) exhibits potent anti-MM activity and reduces osteolytic lesions in the murine myeloma model.

References

Okuhashi Y, et al. *Anticancer Res.* 2010 Oct;30(10):4071-4.

Nwabo Kamdje AH, et al. *Blood.* 2011 Jul 14;118(2):380-9.

Caution: Product has not been fully validated for medical applications. Lab Use Only!

E-mail: tech@probechem.com